

**ORGANIZATIONAL MAINTENANCE REPAIR PARTS
AND SPECIAL TOOLS LISTS
ANTENNA SUPPORTS AB-105A/FRC, AB-105B/FRC
(FSN 5985-228-0225), AND AB-105C/FRC
(FSN 5985-537-3739)**

**Headquarters, Department of the Army, Washington, DC
13 December 1974**

Current as of 18 September 1974

	Paragraph	Page
SECTION I. INTRODUCTION		
Scope	1-1	2
General	1-2	2
Explanation of columns	1-3	2
Special information	1-4	4
Location of repair parts	1-5	4
Abbreviations (Not applicable)	1-6	4
Reporting of equipment publication improvements	1-7	5
II. PRESCRIBED LOAD ALLOWANCE (Not applicable)		
III. REPAIR PARTS LIST		6
IV. SPECIAL TOOLS, TEST AND SUPPORT EQUIPMENT		8
V. INDEX - FEDERAL STOCK NUMBER AND REFERENCE NUMBER CROSS- REFERENCE TO FIGURE AND ITEM NUMBER		9

***This manual supersedes TM 11-5985-210-20P, 2 March 1958.**

**SECTION I
INTRODUCTION**

1 - 1 . Scope

This manual lists repair parts and special tools required for the performance of organizational maintenance of the AB-105A/FRC, AB-105B/FRC, and AB-1057/FRC. The PCCN for the equipment is GCRAIH for all models.

1-2. General

This repair parts and special tools list is divided into the following sections:

a. Prescribed Load Allowance (PLA) -Section II. Not applicable.

b. Repair Parts List -Section III. A list of repair parts authorized for the performance of maintenance a. the organizational level. This repair parts list is arranged in alphabetical order.

c. Special Tools, Test and Support Equipment-Section IV. A list of special tools, test and support equipment authorized for the performance of maintenance at the organizational level.

d. Index -Federal Stock Number and Reference Number Cross-Reference to Figure and Item Number - Section V. A list, in ascending numerical sequence, of all Federal stock numbers appearing in the listings, followed by a list, in alphanumeric sequence, of all reference numbers appearing in the listings. Federal stock number and reference numbers are cross-referenced to each illustration figure and item number or reference designation appearance.

1-3. Explanation of Columns

The following provides an explanation of columns in the tabular lists -

a. Source, Maintenance, and Recoverability Codes (SMR).

(1) *Source code.* Indicates the manner of acquiring support items for maintenance, repair, or overhaul of end items. Source codes are:

<i>Code</i>	<i>Explanation</i>
P A -	Item procured and stocked for anticipated or known usage.
P B -	Item procured and stocked for insurance purposes because essentiality dictates that a minimum quantity be available in the supply systems.
P C -	Item procured and stocked and which otherwise would be coded PA except that

<i>Code</i>	<i>Explanation</i>
	it is deteriorative in nature.
P D -	Support item, excluding support equipment, procured for initial issue or outfitting and stocked only for subsequent or additional initial issues or outfittings. Not subject to automatic replenishment.
P E -	Support equipment procured and stocked for initial issue or outfitting to specified maintenance repair activities.
P F -	Support equipment which will not be stocked out which will be centrally procured on demand.
P G -	Item procured and stocked to provide for sustained support for the life of the equipment. It is applied to an item peculiar to the equipment which because of probable discontinuance or shutdown of production facilities would prove uneconomical to reproduce at a later time.
K D -	An item of depot overhaul/repair kit and not purchased separately. Depot kit defined as a kit that provides items required at the time of overhaul or repair.
K F -	An item of a maintenance kit and not purchased separately. Maintenance kit defined as a kit that provides an item that can be replaced at organizational or direct support or general support levels of maintenance.
K B -	Item included in both a depot overhaul/repair kit and a maintenance kit.
M O -	Item to be manufactured or fabricated at organizational level.
M F -	Item to be manufactured or fabricated at direct support maintenance level.
M H -	Item to be manufactured or fabricated at general support maintenance level.
M D -	Item to be manufactured or fabricated at depot maintenance level
A O --	Item to be assembled at organizational level.
A F -	Item to be assembled at direct support maintenance level.
A H -	Item to be assembled at general support maintenance level.
A D --	Item to be assembled at depot maintenance level.
X A -	Item is not procured or stocked because the requirements for the item will result in the replacement of the next higher assembly.

<i>Code</i>	<i>Explanation</i>
X B -	Item is not procured or stocked. If not available through salvage, requisition .
X C -	Installation drawing, diagram instruction sheet, field service drawing, that is identified by manufacturers' part number.
X D -	Support items can be requisitioned with justification.

NOTE

Cannibalization or salvage may be **used as** a source of supply for **any** items source coded above except those coded XA and aircraft support items as restricted by AR 700-42.

(2) *Maintenance code*. Maintenance codes are assigned to indicate the levels of maintenance authorized to USE and REPAIR support items. The maintenance codes are entered in the third and fourth positions of the Uniform SMR Code format as follows:

(a) *Use (third position)*. The maintenance code entered in the third position indicates the lowest maintenance level authorized to remove, replace, and use the support item. The maintenance code entered in **the** third position indicates one of the following levels or "maintenance."

<i>Code</i>	<i>Application/Explanation</i>
O -	Support item is removed, replaced, used at the organizational level of maintenance.
	NOTE
	A code "C" may be used in this position to denote crew or operator maintenance performed within organizational maintenance.
F -	Support item is removed, replaced, used at the direct support maintenance level.
H -	Support item is removed, replaced, used at the general support maintenance.
D -	Support items that are removed, replaced, used at depot only.

(b) *Repair (fourth position)*. The maintenance code entered in the fourth position indicates whether the item is to be repaired and identifies the lowest maintenance level with the capability to perform complete repair (i.e., all authorized maintenance functions). When a maintenance code is not used a dash (-) sign is entered. For multiservice equipment/systems or when a code is entered, this position will contain one of the following maintenance codes as assigned by the service(s) that require the code:

<i>code</i>	<i>Application/Explanation</i>
O -	The lowest maintenance level capable of

<i>Code</i>	<i>Application/Explanation</i>
	complete repair of the support item is the organizational level.
F -	The lowest maintenance level capable of complete repair of the support item is direct support.
H -	The lowest maintenance level capable of complete repair of the support item is general support
D -	The lowest maintenance level capable of complete repair of the support item is the depot level.
L -	Repair restricted to designated Specialized Repair Activity.
Z -	Non-repairable. No repair is authorized.
B -	No repair is authorized. The item may be reconditioned by adjusting, lubricating, etc., at the user level . No parts or special tools are procured for the maintenance of this item.

(3) *Recoverability code*. Recoverability codes are assigned to support items to indicate the disposition action on unserviceable items. The recoverability code is entered in the fifth position of the Uniform SMR Code format as follows:

<i>Code</i>	<i>Explanatton</i>
Z -	Nonrepairable item. When unserviceable, condemn and dispose at the level indicated in the first digit of the maintenance code.
O -	Repairable item. When uneconomically repairable, condemn and dispose at organizational level.
F -	Repairable item. When uneconomically repairable, condemn and dispose at the direct support level.
H -	Repairable item. When uneconomically repairable, condemn and dispose at the general support level.
D -	Repairable item. When beyond lower level repair capability, return to depot. Condemnation and disposal not authorized below depot level.
L -	Repairable item. Repair, condemnation, and disposal not authorized below depot/Specialized Repair Activity level.
A -	Item requires special handling or condemnation procedures because of specific reasons (i.e., precious metal content, high dollar value, critical material or hazardous material).

b. Federal Stock Number. Indicates **the** Federal stock number assigned to the item and will be used for requisitioning purposes.

NOTE

To convert a Federal stock number to a National stock number (NsN), add "00" after the Federal Stock Classification (FSC) code (first four digits). For example, FSN 6625-553-0142 when converted is NSN 6625-00-553-0142

c. *Description.* Indicates the Federal item name and a minimum description required to identify the item. The last line indicates the reference number followed by the applicable Federal Supply We for Manufacturer (FSCM) in parentheses. The FSCM is used as an element in item identification to designate manufacturer or distributor or Government agency, etc., and is identified in SB 708-42.

d. *Unit of Measure (U/M).* Indicates the standard or basic quantity by which the listed item is used in performing the actual maintenance function. This measure is expressed by a two character alphabetical abbreviation; e.g., ea, in, pr, etc., and is the basis used to indicate quantities and allowances in subsequent columns. When the unit of measure differs from the unit of issue, the lowest unit of issue that will satisfy the required units of measure will be requisitioned.

e. *Quantity Incorporated in Unit.* This column indicates the quantity of the item used in the equipment.

f. 15-Day Organizational Maintenance Allowance.

(1) The repair parts indicated by an asterisk in the allowance column represent those authorized for use at the organizational category, and will be requisitioned on an "as required" basis, until stockage is based on demand in accordance with AR 710-2.

(2) Major Army commanders are authorized to approve reduction in the range of support items authorized for use in units within their commands. Recommendations for increase in range of items authorized for use will be forwarded to Commander, US Army Electronics Command, ATTN: AMSEL-MA-CR, Fort Monmouth, NJ 07703. Any changes approved will be in a revision to the RPSTL.

(3) Allowance quantities are indicated in the special tools list section for special tools, TMDE, and other equipment.

g. *Illustration.* This column is divided as follows:

(1) Figure number. Indicates the figure number of the illustration on which the item is shown in TM 11-2615 and TM 11-2615A.

(2) Item number. Indicates the item number or reference designation used to reference the item in the **illustration**.

1-4. Special Information on codes are included in column 3.

Uncoded items are applicable to all models, Identification of the usable on codes used in this publication are -

<i>Code</i>	<i>Used on</i>
BT3	AB-105A/FRC
BT4	AB-105B/FRC
BT5	AB-105C/FRC

b. The basis of issue for authorized special tools, test and support equipment is the number of end items of equipment supported and the number of maintenance personnel allocated to perform the required maintenance operations

c. The following publications pertain to the equipment and its components:

- TM 11-2615 Antenna Supports AB-105A/FRC and AB-105B/FRC.**
- TM 11-2615A Antenna Support AB-105C/FRC**

1-5. LOCATION OF REPAIR PARTS

a. This manual contains one cross-reference index (sec V) to be used to locate a repair part when either the Federal stock number or reference number (manufacturer's part number) is known. The first column in the index is prepared in numerical or alphanumeric sequence in ascending order. The reference numbers (manufacturer's part numbers) are listed immediately following the last listed Federal stock number in the index of Federal stock number.

b. When the Federal stock number or reference number is known, follow the procedures given in (1) and (2) below.

(1) Refer to the index of Federal stock numbers (sec V) and locate the Federal stock number or reference number. The FSN and reference number are cross-referenced to the applicable figure and item number or reference designation.

(2) Refer to the repair parts list (sec III) and locate the figure number (col 7a) and item number or reference designation (col 7b) as noted in the FSN index.

c. When the figure and item number or reference designation are known, scrutinize columns 7a and 7b of the repair parts list (sec III) until the item is located.

d. When the FSN, reference number, figure number, item number and reference designation are not known, scrutinize column 3 of the repair parts list (sec III), which is arranged in alphabetical order.

1-6. Abbreviations

Not applicable

1-7. Reporting of Equipment Publication
Improvements

The reporting of errors, omissions, and recommendations for improving this publication by the individual

user is encouraged. Reports should be submitted on DA Form 2028 (Recommended Changes to Publications and Blank Forms) and forwarded direct to Commander, US Army Electronics Command, ATTN: **AMSEL-MA-CR**, Fort Monmouth, NJ 07703.

SECTION III

TM 11-5985-210-20P

(1) SMR CODE	(2) FEDERAL STOCK NUMBER	(3) DESCRIPTION REFERENCE NUMBER & MFR CODE	(4) UNIT OF MEAS	(5) QTY INC IN UNIT	(6) 15-DAY ORGANIZATIONAL MAINTENANCE ALV				(7) ILLUSTRATION	
					(a)	(b)	(c)	(d)	(a)	(b)
					1-5	6-20	21-50	51-100	FIGURE NO	ITEM NO
PAUZZ	5306-206-4989	GROUP 0001 ANTENNA SUPPORT BOLT, MUCK NO-REF-DESIG STEEL, MUCK, 2-3/8 IN. LG FROM CTR LINE, 3/4 IN -1UNC 2 X 1 FT 6-3/4 IN LG, THD 3 IN LG SCD27421 (80063) BT5	EA	2	*	*	*	*		
XDOZZ		BOLT, EYE NO-REF-DESIG 1 1/2 IN LG O/A, (NOTE,.... USED IN EQUIPMENTS ON ALL ORDERS PREVIOUS TO ORDER 28607-PH-55) Z17871 (81349)	EA	2	*	*	*	*		
XDOZZ		BOLT, EYE NO-REF-DESIG THIMBLE EYE, 6-1/4 IN.. LG O/A (NOTE, USED IN EQUIPMENT IN ORDERS 28607- PH-55 AND 50965-PH-57)	EA	2	*	*	*	*		
PAUZZ	5340-545-6557	SCD25290-2 (80063) BT5 BOLT, EYE NO-REF-DESIG 1 1/2-13/16 IN LG O/A..... (NOTE USE IN EQUIPMENT ON ORDER 28607-PH-55 AND 50965-PH-57)	EA	1	*	*	*	*		
PAUZZ	5306-543-2351	SCD25290-1 (80063) BT5 BOLT, MACHINE NO-REF-DESIG HEX HEAD W/NUT ... 5/8 IN -11NC-2 X 1-1/4 IN LG THD 2 IN LG O/A FFB575 (81348) BT3,BT4	EA	2	*	*	*	*		
PAOZZ	5306-141-2870	BOLT, MACHINE NO-REF-DESIG SQ HEAD INCL HEX.. NUT 3/8 IN -16-NC-2 1-1/4 IN LG SCD25290-11XXXXX* BT3,BT4 AX (80063)	EA	60	*	*	*	*		
PAUZZ	5306-141-2870	BOLT, MACHINE NO-REF-DESIG SQ HEAD, INCL HEX.. NUT, 3/8 IN M16-NC-2, 1-1/4 IN LG SCD25290-1XXXXX* BT5 AX (80063)	EA	99	*	*	*	*		
PAUZZ	5306-579-1451	BOLT, MACHINE NO-REF-DESIG SQ HEAD INCL HEX.. NUT 3/8 IN -16NC-2 1 IN LG SCD25290-10 (80063) 3,BT4	EA	524	*	*	*	*		
PAJZZ	5306-579-145	BOLT, MACHINE NO-REF-DESIG SQ HEAD INCL HEX.. NUT 3/8 IN -16NC-2 1 IN LG SCD25290-10 (80063) BT5	EA	516	*	*	*	*		
XDOZZ		BOLT, MACHINE NO-REF-DESIG STEEL, SQ HEAD,.... INCL HEX NUT, 3/4 IN-1 1/2 IN LG THD 2 X 1-1/4 IN, 2-1/4 IN LG O/A SCD25290-1XXXXX* BT5 AX (80063)	EA	2	*	*	*	*		
XDOZZ		BOLT, MACHINE XXXX NO-REF-DESIG SQ HEAD INCL.. HEX NUT 3/8 IN -16-NC-2 1-1/2 IN LG (ORD STK NO.H101-8457979) SCD25290 (80063)	EA	5	*	*	*	*		
ABUZZ		BOLT, MACHINE XXXX NO-REF-DESIG SQ HEAD INCL.. HEX NUT 1/2 IN -13-NC-2-1-1/4 INLG 1-3/8 IN LG O/A (ORD STK NO.H101-8457979) SCD25290 (80063) BT5	EA	12	*	*	*	*		
PAUZZ	5306-498-8385	BOLT, SHOULDER NO-REF-DESIG STEEL SQ HEAD ... 5/8 IN -11-NC-2 1-1/4 IN THD PORTION 6-3/4 IN NOM LG SCB25307 (80063)	EA	2	*	*	*	*	8	
XDOZZ		LAMP, ELECTRICAL NO-REF-DESIG ACCUM 1/2 IN... DIA MTL (NOTE NUT USED IN EQUIPMENT ON ORDER 28607-PH-55)	FA	1	*	*	*	*		
PAUZZ	5975-193-6794	SCB176014 (80063) WUY WR1 TENSION MEMBER, WIRE ROPE ... 401 FEET 5 INCHES LONG SCC25335 (80063)	FA	1	*	*	*	*	2	461
PAUZZ	5975-296-1842	WUY WR2 TENSION MEMBER, WIRE ROPE ... 400 FEET 6 INCHES LONG SCC25336 (80063)	EA	2	*	*	*	*	2	462
XDOZZ		NUT, PLAIN HEXAGON NO-REF-DESIG 5/8 IN -11NC 2 1-1/16 IN ACROSS FLATS (ORD STK NO. H101- 8458082) SCD25290-15 (80063)	EA	2	*	*	*	*		
XDOZZ		ROD, ANCHOR 32 TURNBUCKLE TYPE C/O. 6 IN TURNBUCKLE W/7 IN LG THIMBLE EYE LN ONE END AND 6 FT 5 IN ROD ON OTHER END 7 FT LG O/A ESE32736 (80063) BT3,BT4	EA	2	*	*	*	*	2	32
PAUZZ	4030-281-0102	ROD, ANCHOR 32 TURNBUCKLE TYPE C/O. 6 FT 5 IN LG ANCHOR ROD, TURNBUCKLE AND EYE BOLT 7FT LG O/A	EA	2	*	*	*	*	2	32
PAOZZ	5975-305-5755	SCD25290-2 (80063) BT5 ROD, ANCHOR ASSEMBLY TAIL (NOTE USED ON..... ORDERS NO. 23607-PH-55 AND 50965-PH-57 ONLY)	FA	1	*	*	*	*		Tail
PAUZZ	4030-227-1737	SCD25290-1 (80063) BT5 SHACKLE NO-REF-DESIG ANCHOR TYPE U SHAPE 4 IN LG X 2-1/4 IN W 9/16 DIA STOK 8799 (40190) BT3,BT4	EA	1	*	*	*	*	18	

SECTION III

TM 11-5985-210-20P

(1) SMR CODE	(2) FEDERAL STOCK NUMBER	(3) DESCRIPTION REFERENCE NUMBER & MFR CODE USABLE ON CODE		(4) UNIT OF MEAS	(5) QTY. INC IN UNIT	(6) 15-DAY ORGANIZATIONAL MAINTENANCE ALW				(7) ILLUSTRATION	
						(a)	(b)	(c)	(d)	(a)	(b)
						1-5	6-20	21-50	51-100	FIGURE NO	ITEM NO
XDOZZ	1630-524-0141	SHACKLE NO-REF-DESIG ANCHOR TYPE U SHAPE 2-- 1/4 IN LG X 1-1/2 IN W 5/16 IN DIA STOCK (NOTE USED IN ALL EQUIPMENTS ON ALL ORDER PREVIOUS TO ORDER 28607-PH- G209-5-16 (9U190)		EA	2	*	*	*	*	18	
PAQZZ		SHACKLE, ANCHOR NC-REF-DESIG SHOULDER EYE HEAD TYPE 1 END THD (NOTE USED IN EQUIPMENT ON ORDERS 28607-PH-55 AND 50965-PH-57)		EA	2	*	*	*	*	18	
PAQZZ	4030-149-5574	SHACKLE NO-REF-DESIG TO ATTACH GUY TO ANCHOR.. ROD FOR 6/8 IN DIA ROPE SCC25336-1 (80063) BT5		EA	1	*	*	*	*	18	
PAQZZ	5340-194-9864	TURNBUCKLE NO-REF-DESIG OPEN BUCKLE TYPE 14- 1/2 IN LG O/A 12 IN TAKE UP (NOTE USED IN EQUIPMENTS ON ALL ORDERS PREVIOUS TO ORDER L0607-PH-55)		EA	1	*	*	*	*	2	
XDOZZ		WASHER, LOCK NO-REF-DESIG SPLIT 0.255 IN ID X 1/2 IN OD X 0.062 IN THK 450T (74326) BT3,BT4		EA	2	*	*	*	*		

(1) SMR CODE	(2) FEDERAL STOCK NUMBER	DESCRIPTION REFERENCE NUMBER & MFR CODE USABLE ON CODE		(4) UNIT OF MEAS	(5) QTY INC IN UNIT	(6) 15-DAY ORGANIZATIONAL MAINTENANCE ALW				(7) ILLUSTRATION	
						(a)	(b)	(c)	(d)	(a)	(b)
						1-5	6-20	21-50	51-100	FIGURE NO	ITEM NO
AB02Z		BOLT, MACHINE NO-REF-DESIG SQ HEAD 3/8 IN -- 16X3/4 LG FULLY THD W/NUT TYPE A-2 (ORD STK NO. H101-8457946) FF8571 (81348)	BT3,BT4	EA	105						

INDEX - FEDERAL STOCK NUMBER AND REFERENCE NUMBER
CROSS-REFERENCE TO FIGURE AND ITEM NUMBER

STOCK NUMBER	FIGURE NO.	ITEM NO.	STOCK NUMBER	FIGURE NO.	ITEM NO.
1830-524-0141	18		5306-579-1451		
4033-149-5574	18				
4030-227-1737	18				
4030-281-0102	2	32	5340-194-9864	2	
5308-141-2870			5340-545-8557		
5306-206-4989			5975-1923-6794	2	NR1
5306-498-8385	8		5975-296-1842	2	NR2
5306-543-2351			5975-305-5755		TA1

REFERENCE NO.	MFR CODE	FIG. NO.	ITEM NO.	REFERENCE NO.	MFR CODE	FIG. NO.	ITEM NO.
ESE52736	80063	2	32	SCD25290-1	80063		
E1184	78998	2		SCD25290-1	80063		TA1
FFB571	81348			SCD25290-1XXXXXXX	80063		
FFB575	81348			SCD25290-10	80063		
G209-5-16	90190	18		SCD25290-11XXXXXXX	80063		
SCB176514	80063			SCD25290-15	80063		
SCB23307	80063	8		SCD25290-2	80063		
SCC25335	80063	2	NR1	SCD25290-2	80063	2	32
SCC25335-1	80063	18		SCD27421	80063		
SCC25336	80063	2	NR2	217871	81349		
SCC25336-1	80063	18		4501	74326		
SCD25290	80063			6799	90190	18	

By Order of the Secretary of the Army:

official:

VERNE L. BOWERS
Major General, United States Army
The Adjutant General

FRED C. WEYAND
General, United States Army
Chief of Staff

Distribution:

Active Army:

USASA (2)	Fort Carson (5)
CNGB (1)	Ft Richardson (ECOM Ofc) (2)
Dir of Trans(1)	Army Dep (1) except
COE (1)	LBAD (14)
TSG (1)	SAAD (30)
USAARENBD (1)	TOAD (14)
USAMB (10)	ATAD (10)
AMC (1)	USA Dep (2)
TRADOC (2)	Sig Sec USA Dep (2)
ARADOOM (2)	Sig Dep (2)
ARADCOM Rgn (2)	Sig FLDMS (1)
OS Maj Comd (4)	USAERDAA (1)
LOGCOMDS (3)	USAERDAW (1)
MICOM (2)	MAAG (1)
TECOM (2)	USARMIS (1)
USACC (4)	USACC Telecomm Cen (2)
MDW (1)	USACC-CONUS (2)
Armies (2)	USACC-Europe (2)
Corps (2)	USACC-Pacific (2)
HISA (Ft Monmouth) (18)	USACC-South (1)
Svc Colleges (1)	USASTRATCOM-T (2)
USASESS (5)	Units org under fol TOE
USAADS (2)	(1 copy each unit):
USAFAS (2)	11-57
USAARMS (2)	11-85
USAIS (2)	11-97
USAES (2)	11-98
USAINTC (3)	11-117
WRAMC (1)	11-127
ATS (1)	11-302
Fort Gordon (10)	11-500(AA-AC)
Fort Huachuca(10)	29-134
WSMR (1)	29-136

NG: None.

USAR: None.

For explanation of abbreviations used, sec AR 310-50.

★U.S. GOVERNMENT PRINTING OFFICE: 1974-065136/381

END

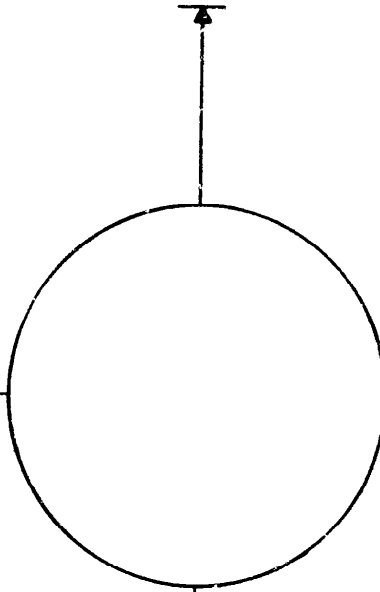
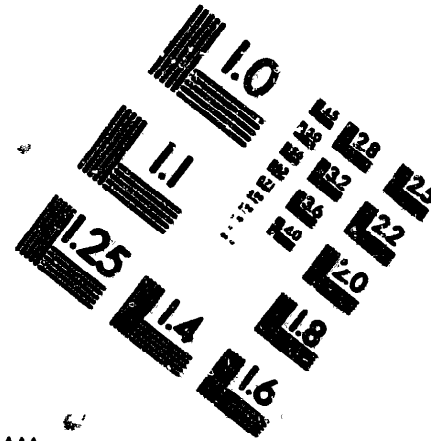
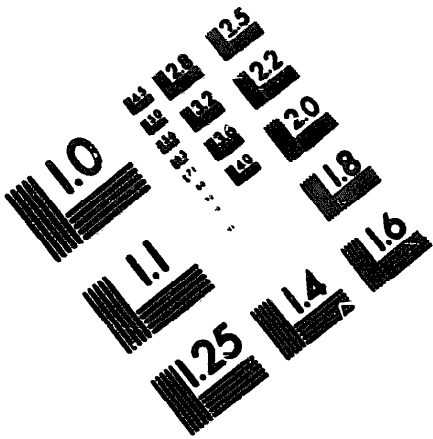
7-25-83

DATE





DEPARTMENT OF THE ARMY
MICROFORM
TEST TARGET



150 MM

1.0 mm (e= 0.1 mm)

ABCDEFGHIJKLMN OPQRSTUVWXYZ 1234567890
abcdefghijklmnopqrstuvwxyz \$%&' /%# 1/2 3/4 —→ + x & @ *

1.5 mm (e= 1.09 mm)

ABCDEFGHIJL MNOPQRSTUVWXYZ 1234567890
abcdefghijklmnopqrstuvwxyz \$%&' /%# 1/2 3/4 —→ + x & @ *

2.0 mm (e= 1.37 mm)

ABCDEFGHIJKLMN OPQRSTUVWXYZ
abcdefghijklmnopqrstuvwxyz
1234567890 \$%&' /%# 1/2 3/4 —→ + x & @ *

2.5 mm (e= 1.77 mm)

ABCDEFGHIJKLMN OPQRSTUVWXYZ
abcdefghijklmnopqrstuvwxyz
1234567890 \$%&' /%# 1/2 3/4 —→ + x & @ *

1.0 mm (e= 0.1 mm)

ABCDEFGHIJKLMN OPQRSTUVWXYZ 1234567890
abcdefghijklmnopqrstuvwxyz \$%&' /%# 1/2 3/4 —→ + x & @ *

1.5 mm (e= 1.09 mm)

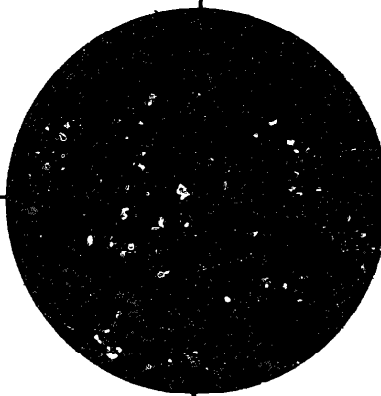
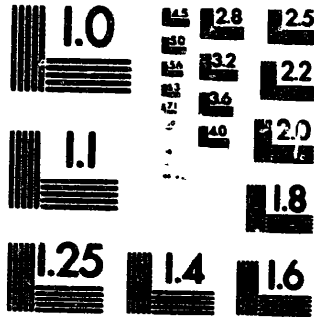
ABCDEFGHIJKLMN OPQRSTUVWXYZ 1234567890
abcdefghijklmnopqrstuvwxyz \$%&' /%# 1/2 3/4 —→ + x & @ *

2.0 mm (e= 1.37 mm)

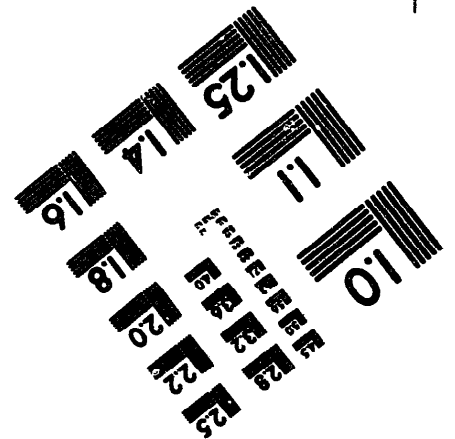
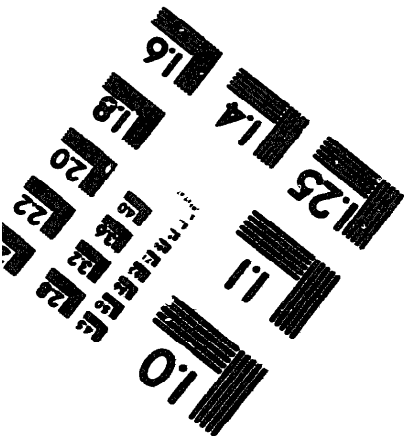
ABCDEFGHIJKLMN OPQRSTUVWXYZ
abcdefghijklmnopqrstuvwxyz
1234567890 \$%&' /%# 1/2 3/4 —→ + x & @ *

2.5 mm (e= 1.77 mm)

ABCDEFGHIJKLMN OPQRSTUVWXYZ
abcdefghijklmnopqrstuvwxyz
1234567890 \$%&' /%# 1/2 3/4 —→ + x & @ *



200 MM



250 MM